

INSTALLATION INSTRUCTIONS

Item#2386-77(New.09/14/2017)

READ AND SAVE THESE INSTRUCTIONS

WARNING! SHUT POWER OFF AT FUSE OR CIRCUIT BREAKER.

AVERTISSEMENT! COUPER LE COURANT AU NIVEAU DES FUSIBLES OU DU DISJONCTEUR.

HANGING THE FIXTURE (Fig. 1)

1. Carefully remove the fixture from the carton and check that all parts are included as shown in the illustration.
2. Shut off power at the circuit breaker and remove old fixture including the mounting hardware.
3. Position the mounting plate (B) on the ceiling and mark the location of the two drywall anchors (L). Pre-drill the holes for the drywall anchors (L) Then insert the drywall anchors (L) into the ceiling.
4. Attach mounting plate (B) to the outlet box using mounting screws (F)(size: 8/32*25mm)and wood screws (K) into drywall anchors (L). The side of the mounting plate marked "GND" must face out.

CONNECTING THE WIRES (Fig. 2)

5. At this point, connect the electrical wires as shown in (Fig.2), Make sure that all wire connections are secured. If your outlet has a ground wire (green or bare copper), connect the fixtures Ground Wire to it. Otherwise, connect the fixture Ground Wire directly to the circular strap using the Green Screw.
6. Position the bottom of back plate (D) with provide the screw (G) .
7. Make the lamp shade close to the back plate(D) and then fix it with screw(G) and screw(I)

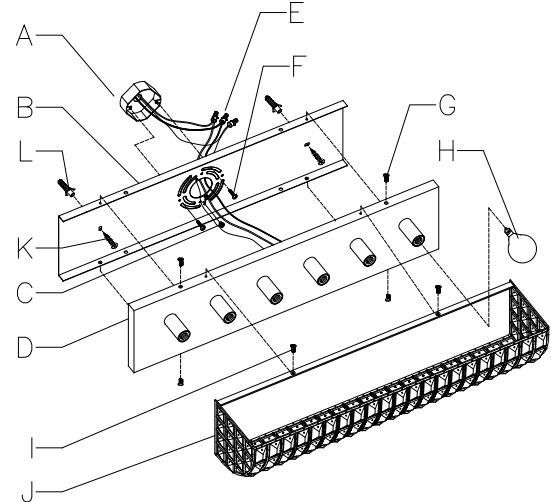
INSTALL LIGHT BULB (Fig. 1)

8. Install light bulb (H) (not included) in accordance with the fixture's specifications. **(DO NOT EXCEED THE MAXIMUM WATTAGE RATING!!) (NE PAS DEPASSER LA PUISSANCE NOMINALE MAXIMALE!)**

FINISH THE INSTALLATION (Fig. 1)

9. Your installation is complete now. Return power to the junction box and test the fixture. **Note: Illustration (Fig.1) on this manual is for installation purposes only. It may or may not be identical to the fixture purchased.**

Fig.1



GC2364-1
22*38 (4PCS)

GC2341-4
22*22 (1PC)

GC2341-4
22*22 (13PCS)

- A-022-550118
- Mounting plate
- Ground Screw
- Mounting Screw*2

Fig. 2

