

INSTALLATION INSTRUCTIONS FOR 381-267B-L

For Wall Mount Fixture

WARNING! SHUT POWER OFF AT FUSE OR CIRCUIT BREAKER.

AVERTISSEMENT ! COUPER LE COURANT AU NIVEAU DES FUSIBLES OU DO DISJONCTEUR.

PREPARATION

1. Shut off power at the fuse box or circuit breaker box. If necessary remove the old fixture and mounting hardware.
2. Carefully unpack your new fixture and lay out all the parts on a clear area. Take care not to lose any small parts necessary for installation.

MOUNTING THE FIXTURE (FIG. 1)

3. Remove screws (C) to disconnect mounting back plate (B).
4. Secure mounting back plate (B) to junction box (A) using junction boxes screws (D) (Size: 8-32*1/2"L). The side of the mounting back plate marked "GND" must face out.

CONNECTING THE WIRES (FIG. 2)

5. At this point, connect the electrical wires as shown in Fig. 2, making sure that all wire connectors are secured. If your outlet has a ground wire (green or bare copper), connect the fixtures ground wire to it. Otherwise, connect the fixture ground wire directly to the mounting plate (B) using the green screw provided. After wires are connected, tuck them carefully inside the junction box.

FINISHING THE INSTALLATION (FIG.1)

6. Remove screws (G) to disconnect bracket (E) and screws (I) to disconnect the bracket (F).
7. Put diffuser G381-CVR (J) along one side of bracket (F), slide glass G381 (K) into the bracket (F) along the Arc from one side to the other side, then put diffuser G381-CVR (J) along the other side of bracket (F).
8. Align bracket (L) over bracket (H) with screws (I) and align bracket (E) over bracket (H) with screws (G).
9. Align the fixture over the mounting back plate (B) and secure with screws (C).

CAUTION /ATTENTION: When handling the fixture, do not apply pressure to the LEDs. Hold the fixture by bracket (E) and bracket (H).

Replacing LED module (Fig. 3)

The LED module can be replaced by a qualified electrician without cutting of wire and without damage to any decorative element to which the fixture is attached. See installation steps for more details (Fig 3.)

- a. Shut off power. Remove screws (C), screws (G), screws (I) to disconnect bracket (H), bracket (E), bracket (L).
- b. Remove screws (N) and gasket (S) to disconnect clear glass G381-LCVR (L).
- c. Remove the wire (P) from connector (R) on LED module (O) by lightly pressing on the release button located on the top of the wire connector.
- d. Remove screws (Q) to disconnect the LED module (O) from the heat sink.
- e. Reverse steps a-d for installing the new LED module.
- f. Note: The LED module should be provided by a specified supplier.
- g. For better heat dissipation the LED module (O) should be applied with thermal grease when re-lamping.

Fig. 1

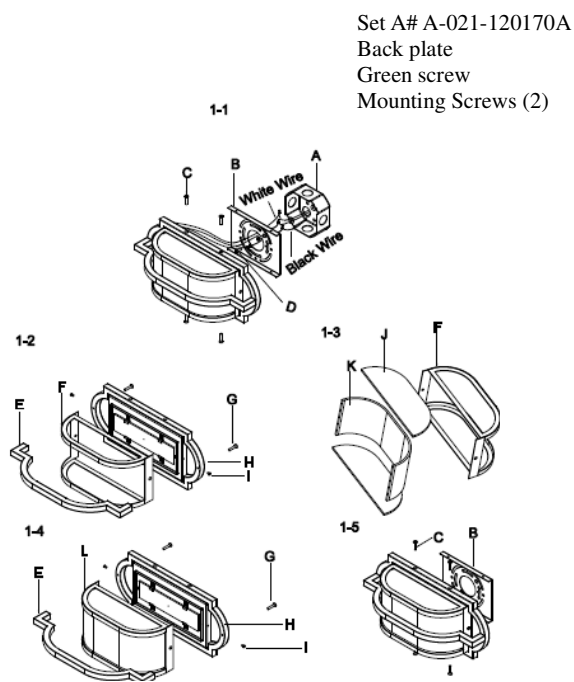


Fig.2

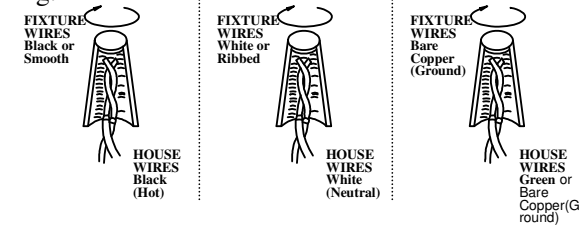
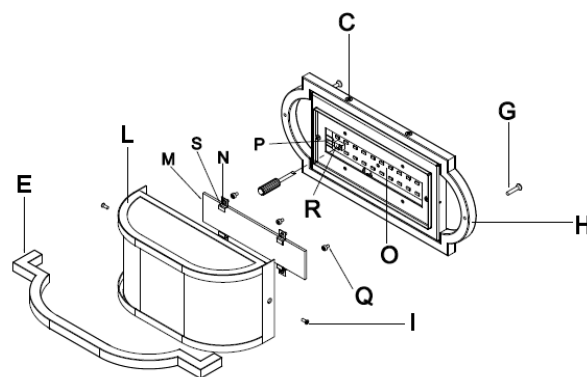


Fig 3



IMPORTANT: Fixture should be installed by a qualified electrician to ensure proper wiring and installation.
Dimmable with ELV and/or LED compatible wall dimmer switches.