

INSTALLATION INSTRUCTIONS

Item#3849-66A (New. 8/03/2020)

READ AND SAVE THESE INSTRUCTIONS

WARNING! SHUT POWER OFF AT FUSE OR CIRCUIT BREAKER.

AVERTISSEMENT! COUPER LE COURANT AU NIVEAU DES FUSIBLES OU DU DISJONCTEUR.

PREPARATION (Fig. 1)

1. Shut off the power at the fuse box or circuit breaker. If necessary, remove the old fixture, including the mounting hardware.
2. Carefully unpack your new fixture and lay out all the parts in a clean area. Take care not to misplace any small parts necessary for installation.

ASSEMBLING THE FIXTURE WITH CHAIN LOOP (Fig. 1&Fig. 2)

3. Secure rod (I) onto the all thread (J) of the fixture body and slide coupling (S) over the all thread on rod (I).
4. Determine the desired hanging height and thread rods (F1, F2 and F3) to rod (I). Screw loop (H1) by to rod (F1). Pass the wires carefully through each rod as you assemble.
5. Attach the quick link (G) connect to loop (H1) and loop (H2) on the canopy (D). Carefully feed the wire through loop (H1), quick link (G) and loop (H2).
6. Thread screws (A) into the pre-drilled holes in the circular strap (B) spaced the same distance apart as the holes in the canopy (D).
7. Attach the circular strap (B) to the junction box, not included, using mounting screws (C) (Size: #8-32N*L0.5"). The side of the circular strap marked "GND" must face out.

CONNECTING THE WIRES (Fig. 3)

8. Connect the electrical wires as shown in figure 3, making sure that all wire connectors are secured. If your junction box has a ground wire (green or bare copper), connect the fixture's ground wire to it. Otherwise, connect the fixture's ground wire directly to the circular strap (B) using the green screw provided.
9. Tuck the wire connectors neatly into the junction box and raise the canopy (D) to the ceiling.

COMPLETING THE INSTALLATION (Fig. 1)

10. Slide the canopy (D) over screws (A), and secure with knurled knobs (E).
11. Place the support ring (P) over the socket (O).
12. Install (9) nine candelabra base bulbs (R) up to 60 watts each or CFL or LED equivalent (not included) in accordance with the fixture specification—**DO NOT EXCEED THE MAXIMUM WATTAGE RATING! (NE PAS DEPASSER LA PUISSANCE NOMINALE MAXIMALE!)**.
13. Tear off the EVA protective film on the inside of the support ring (P) and slide glass shade (Q) onto support ring (P). Press firmly to secure while holding the support ring (P).
14. The glass (Q) can be adjusted by the support ring (P). Lift up slightly for additional adjustability.
15. Screw the rod (L) onto the all thread (K) on the fixture body (N).
16. Screw the rods (M) onto the fixture body (N).

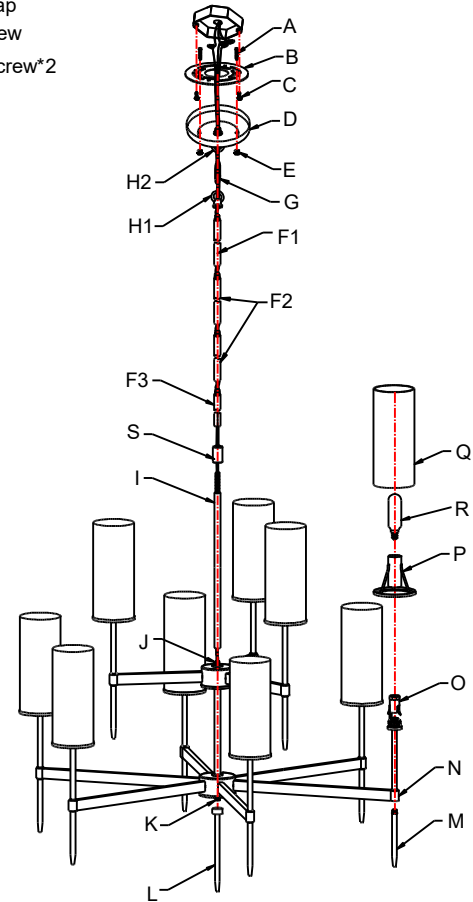
Your installation is now complete. Return power to the junction box and test the fixture.

Note: Illustration (Fig. 1) on this manual is for installation purposes only. It may or may not be identical to the fixture purchased.

Page: 1/2

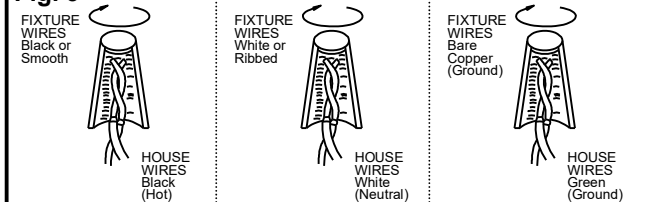
Fig. 1

Set# A-020-A
-Circular Strap
-Ground Screw
-Mounting Screw*2



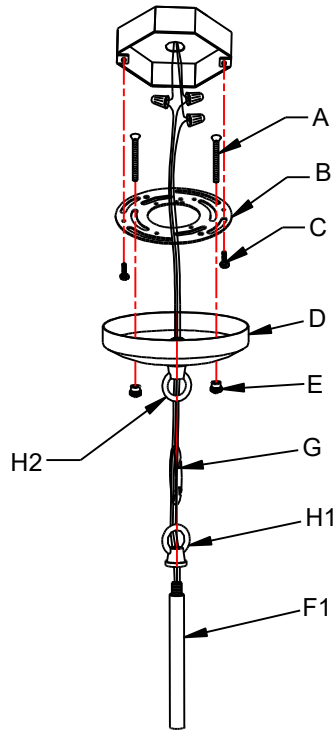
Rod# W30-1-66A*1(F1)
W30-1-66A*2(F2)
W30-H-66A*1(F3)

Fig. 3



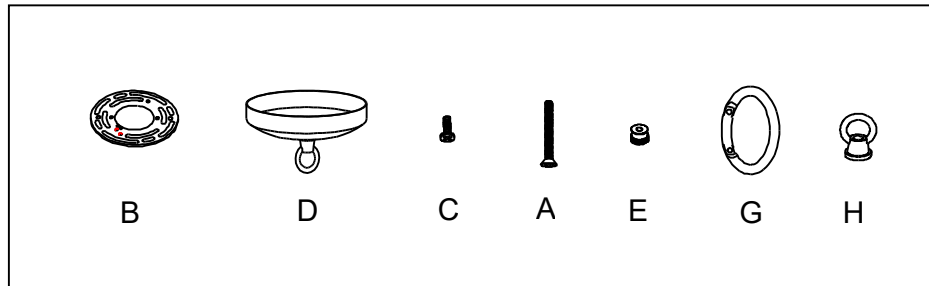
LA-3275E

Fig.2



a. Hardware Bag:

- A. Screw*2
- B. Circular Strap*1
- D. Canopy *1
- C. Mounting Screw*2
- E. Knurled Knob*2
- H. Loop*2
- G. Quick Link*1



b. Hardware Bag:

- F1. ROD 12"*1
- F2. ROD 12"*2
- F3. ROD 6"*1

