

INSTALLATION INSTRUCTIONS

Item#6373 (Rev. 07/26/2012)

READ AND SAVE THESE INSTRUCTIONS

WARNING! SHUT POWER OFF AT FUSE OR CIRCUIT BREAKER.

AVERTISSEMENT! COUPER LE COURANT AU NIVEAU DES FUSIBLES OU DU DISJONCTEUR.

MOUNTING THE FIXTURE (Fig.1 & 2)

1. Shut off the power at the circuit breaker and remove old fixture, including the mounting hardware.
2. Carefully remove the fixture from the carton and check that all parts are included as shown in the illustration.
3. Start by mounting the fixture, follow the appropriate illustrations as shown in Fig. 1 & 2 for your fixture style.
4. Attach the Mounting Plate (A) using Junction Box Screws (B) to the Outlet Box.

CONNECTING THE WIRES (Fig. 3)

5. At this point, connect the electrical wires as shown in Fig. 2, making sure that all wire connectors are secured. If your outlet box has a ground wire (green or bare copper), connect the fixture's Ground Wire to it. Otherwise, connect the fixture's Ground Wire directly to the mounting plate using the Green Screw provided. After wires are connected, tuck them carefully inside the Junction Box.

FINISHING THE INSTALLATION (Fig.1 & 2)

6. Place Fixture Body (D) over Mounting Plate (A), fasten with Screws (C) by using Allen Wrench (H) provided.
7. Install light bulbs (not included) in accordance with fixture specifications. **(DO NOT EXCEED THE MAXIMUM WATTAGE RATING!) (NE PAS DEPASSER LA PUISSANCE NOMINALE MAXIMALE!)**
8. Place the Curved Glass Panel (F) into the Hold Strap (G), while holding the Curved Glass Panel toward the backplate of fixture body, then place the typed Clips (J) on the end of Hold Strap into the Slots (I) on the top and bottom of backplate and fixing them with Screws (E).

Your installation is now complete. Return power and test the fixture.

Note: Illustration (Fig.1) on this manual is for installation purposes only. It may or may not be identical to the fixture purchased.

Fig. 1

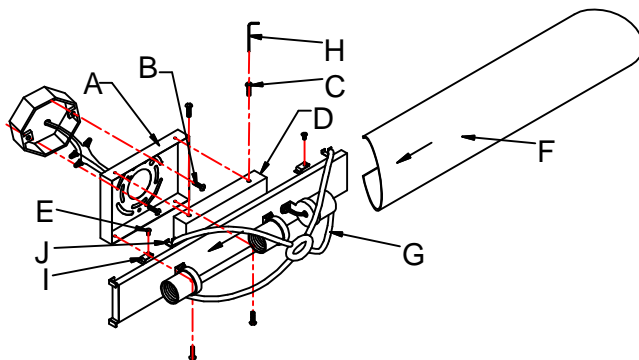


Fig. 2

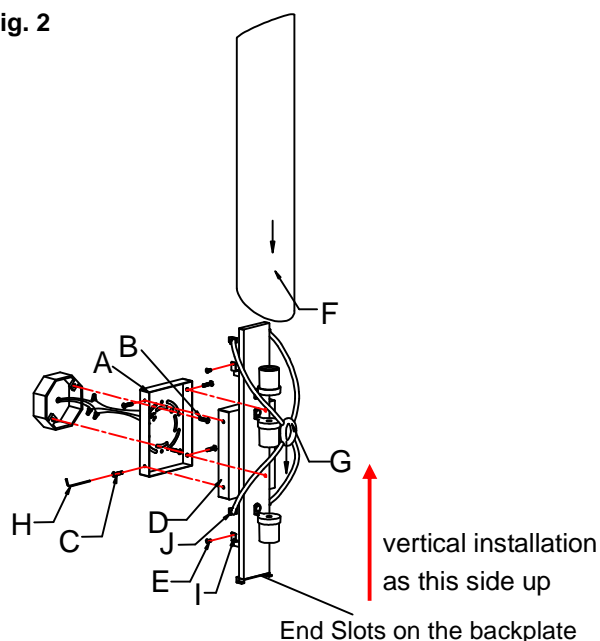


Fig. 3

