

INSTALLATION INSTRUCTIONS

For Model 72456-143C

WARNING! SHUT POWER OFF AT FUSE OR CIRCUIT BREAKER.

AVERTISSEMENT! COUPER LE COURANT AU NIVEAU DES FUSIBLES OU DU DISJONCTEUR.

HANGING THE FIXTURE (Fig. 1)

1. Shut off the power at the circuit breaker and remove the old fixture including the mounting hardware.
2. Carefully unpack your new fixture and lay out all the parts on a clear area. Take care not to lose any small parts necessary for installation.
3. Take off the cage (I) by loosening four thumb screws (E) by using the Allen wrench (D).
4. Put the glass into the fixture (I), secure with Metal plate (H) and thumb screw (G) tighten with screw driver (Not supplied)
5. Install the bulb (T10 Medium base, **not included**) in accordance with the fixture's specification. Attach the cage (I) back to the post cup (A) (not provided) by four thumb screws (E) by using the Allen wrench (D).

**DO NOT EXCEED THE MAXIMUM WATTAGE RATING!
(NE PAS DEPASSER LA PUISSANCE NOMINALE MAXIMALE!)**

CONNECTINE THE WIRES (Fig.2)

6. While supporting the fixture, connect the electrical wires as shown in figure 2. If your post has a ground wire (green or bare copper), connect the fixture ground wire to it. If not, consult your electrician for proper grounding. After the wires are connected, tuck them carefully inside the post (A).

COMPLETING THE INSTALLATION (Fig. 1)

7. Place the fixture onto post cup (A)(not provided), and secure with the 3 mounting screws (B)

Your installation is now complete. Return power to the junction box and test the fixture

Fig. 1

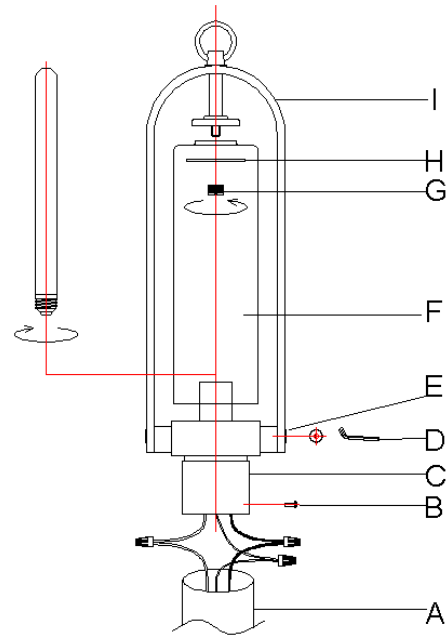


Fig. 2

