

# INSTALLATION INSTRUCTIONS

Model# 72794-143-L / 72797-143-L  
 READ AND SAVE THESE INSTRUCTIONS

**WARNING! SHUT POWER OFF AT FUSE OR CIRCUIT BREAKER.**  
**AVERTISSEMENT! COUPER LE COURANT AU NIVEAU DES FUSIBLES OU DU DISJONCTEUR.**

## PREPARING FOR INSTALLATION (Fig. 1)

1. Shut off power at the fuse box or circuit breaker box and remove the old fixture including the mounting hardware.
2. Carefully unpack your new fixture and lay out all the parts in a clear area. Take care not to misplace any small parts necessary for installation.
3. Thread all thread (G) into cross bar (B) and secure with lock washer (E) and hex nut (F). Note: The length of all thread into cross bar (B) may be adjusted if necessary.
4. Thread other end of all thread (G) into ceiling loop (I) until snug.
5. Attach cross bar (B) assembly using outlet box screws (D) to outlet box (A) (Not included). The side of cross bar (B) marked "GND" must face out.
6. Determine desired hanging height and use a pair of proper chain pliers to remove and discard excess chain.
7. Attach one quick link (L) to end of chain (K) and then to fixture loop (M), close quick link (L). Slip lock collar (J) and canopy (H) over chain and allow them to rest on fixture body. Attach another quick link (L) to other end of chain (K) and then to ceiling loop (I), close quick link (L).
8. Carefully lace fixture's wires through chain. Feed fixture wires through ceiling loop (I) and all thread assembly.
9. Thread glass (O) from the bottom of fixture frame.

## CONNECTING THE WIRES (Fig. 2)

10. Connect the electrical wires as shown in Fig.2. Making sure that all wire connectors are secured. If your outlet box (A) has a ground wire (green or bare copper), connect fixture's ground wire to it. Otherwise, connect fixture's ground wire directly to cross bar (B) using green screw (C) provided.
11. Tuck wire connectors neatly into the outlet box (A).

## COMPLETING THE INSTALLATION (Fig. 1)

12. Raise canopy (H) over ceiling loop (I) and secure with lock collar (J).
13. **LED information (#72794-143-L: 1 x AC LED 8W included. #72797-143-L: 1 x AC LED 11W included.) (DO NOT EXCEED THE MAXIMUM WATTAGE RATING) (NE PAS DEPASSER LA PUISSANCE NOMINALE MAXIMALE!)**
14. This fixture is ETL listed for wet location applications. Needs to be installed under the cover.

## Replacing LED module (Fig.3)

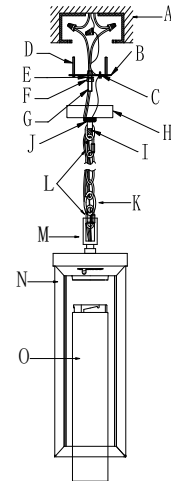
The LED module can be replaced by a qualified electrician without cutting of wire and without damage to any decorative element to which the fixture is attached. See installation steps for more details (Fig.3).

- a. Shut off power. Remove glass (O), loosen screws (Q) and remove glass panel (R).
- b. Loosen screws (P) and washers (S) on LED module (T), then carefully pull out the plug inside top cover, and disconnect plug on wires. Carefully remove LED module (T).
- c. Reverse steps a-b for installing the new LED module.

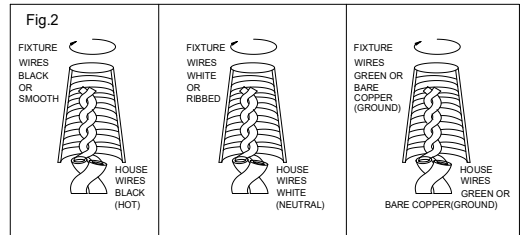
**Note: The LED module should be provided by a specified supplier.**

Your installation is now complete. Return power to the outlet box and test the fixture.

**Fig. 1** Cross Bar (1) (Part# A-010)  
 Chain (1) (Part# HCH2072-143)  
 LED Module (#72794-143-L: L-MD-C1402-8W)  
 (#72797-143-L: L-MD-C1402-11W)  
 Ground Screw (1)  
 Mounting Screws (2)



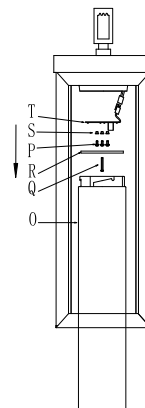
72794-143-L:  
 Glass Code# G72791  
 72797-143-L:  
 Glass Code# G72792



Notice: It is important to use proper chain pliers (Not included) To OPEN and CLOSE the chain included with this fixture. Do not open them with other tools that may twist or stress the chain links. It is important to use proper chain pliers like the ones shown in the diagram.



**Fig. 3**



**“CAUTION-RISK OF FIRE CONSULT A QUALIFIED ELECTRICIAN TO ENSURE CORRECT BRANCH CIRCUIT CONDUCTOR”**

**ATTENTION - RISQUE D'INCENDIE. CONSULTER UN ÉLECTRICIEN QUALIFIÉ POUR VOUS ASSURER QUE LES CONDUCTEURS DE LA DÉRIVATION SONT ADÉQUATS.**

