

# INSTALLATION INSTRUCTIONS

Item#N1849-776 (New.07/29/2024)

## READ AND SAVE THESE INSTRUCTIONS

**WARNING! SHUT POWER OFF AT FUSE OR CIRCUIT BREAKER.**

**AVERTISSEMENT! COUPER LE COURANT AU NIVEAU DES FUSIBLES OU DU DISJONCTEUR.**

### PREPARATION (Fig. 1)

1. Shut off power at the fuse box or circuit breaker box and remove the old fixture including the mounting hardware.
2. Carefully unpack your new fixture and lay out all the parts in a clean area. Take care not to misplace any small parts necessary for installation.

### ASSEMBLING THE FIXTURE (Fig.1 & Fig.3)

3. Loosen decorative knobs (P) to remove mounting plate (B) from canopy (G). Position mounting plate (B) to ceiling and mark location of four mounting holes. Pre-drill the holes for plastic anchors (A). Insert plastic anchors (A) into ceiling.
4. Un thread hexagon nut (E) to loosen steel washer (F), metal panel (R), canopy (G) and swivel (H) with wrench (S) (Provided).
5. Determine the desired hanging height. Pass the wires carefully through rods (I1,I2) and swivel (H) or fixture loop (Q), thread rods (I1,I2) on couplings (J) and secure rods (I1 ,I2) on swivel (H) or fixture loop (Q).
6. Align canopy (G) followed by metal panel (R), steel washer (F) onto swivels (H) or fixture loop (Q) and secure with hexagon nuts (E) with wrench (S) (Provided).
7. Thread 1/4" IPS pipe (Not provided) onto hickey (T) and secure with hex nut (U).
8. Feed wires and safety cable (W) through mounting plate (B) and allow safety cable (W) to exit through the side of hickey (T). Run safety cable (W) through the hickey (T) open hole and secure safety cable (W) with set screw assembly (V) provided.
9. Attach mounting plate (B) to junction box (Not included) using junction box screws (D). The side of mounting plate (B) marked "GND" must face out.
10. Secure mounting plate (B) by threading wood screws (C) through the holes on mounting plate (B) into plastic anchors (A).

### CONNECTING THE WIRES (Fig. 2)

11. Connect the electrical wires as shown in Fig.2, making sure that all wire connectors are secured. If junction box has a ground wire (green or bare copper), connect the fixture's ground wire to it. Otherwise, connect the fixture's ground wire directly to mounting plate (B) using the green screw provided.
12. Tuck the wire connectors neatly into the junction box.

### COMPLETING THE INSTALLATION (Fig. 1)

13. Raise canopy (G) and attach to mounting plate (B), then secure with decorative knobs (P).
14. Place screws (O) through metal frame (K), attach alabaster piece (L) and plastic washer (N) on metal frame (K), then secure with decorative knobs (M).
15. Install (5) five medium base bulbs up to 60 watts each or CFL or LED equivalent (not included) in accordance with the fixture specification—**DO NOT EXCEED THE MAXIMUM WATTAGE RATING! (NE PAS DEPASSER LA PUISSANCE NOMINALE MAXIMALE!)**

### WARNING:

**PLEASE ADJUST THE HEIGHT AND DISTANCE OF THE OF ALABASTER PIECES AFTER INSTALLATION OF ALABASTER.**

**THIS LUMINAIRE MUST BE MOUNTED OR SUPPRTED INDEPENDENT OF AN OUTLET BOX.**

Your installation is now complete. Return power to the junction box and test the fixture.

**Note:** Illustration (Fig. 1) on this manual is for installation purposes only.

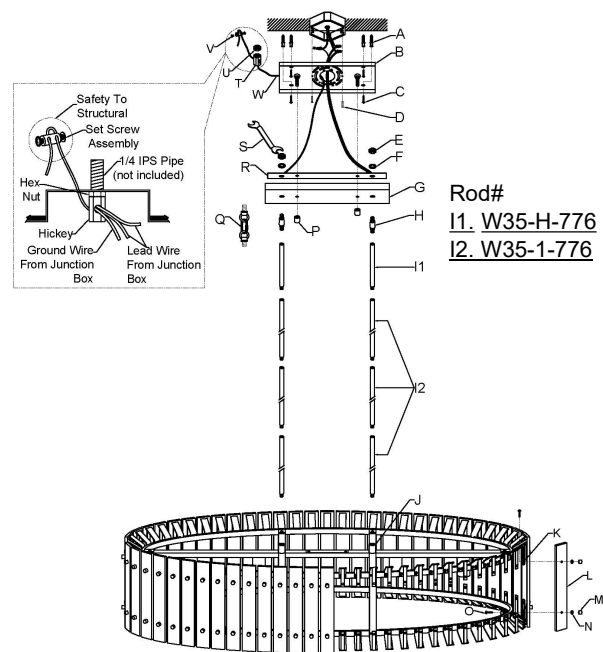
**Fig. 1**

Set#A-012-46A

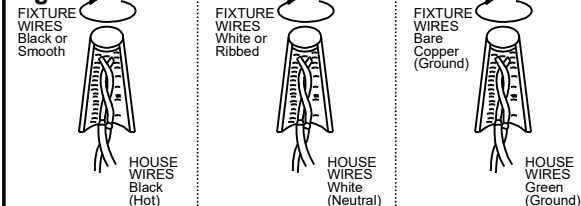
Mounting Plate x 1pc

Ground Screw x 1pc

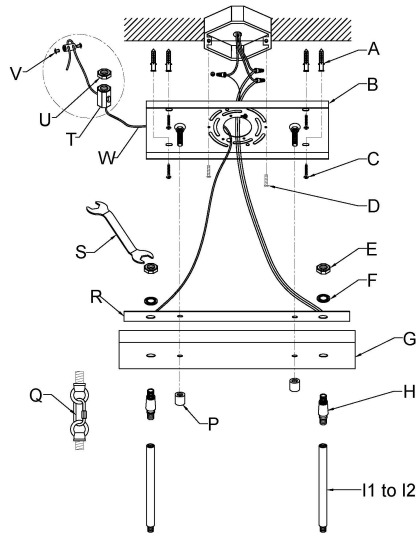
Junction box Screw x 2pcs



**Fig. 2**

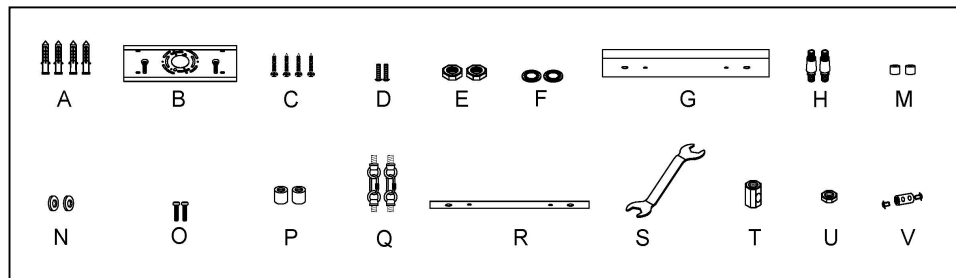


**Fig.3**



**a. Hardware Bag**

- A. Plastic Anchors x 4pcs
- B. Mounting plate x 1pcs
- C. Wood Screw x 4pcs
- D. Junction Box
- Screw x 2pcs
- E. Hexagon Nut x 2pcs
- F. Steel Washer x 2pcs
- G. Canopy x 1pc
- H. Swivel x2pcs
- M. Decorative Knob x 120pcs
- N. Plastic Washer x 120pcs
- O. Screw x120pcs
- P. Decorative Knob x 2pcs
- Q. Loop x 2pcs
- R. Metal Panel x 1pcs
- S. Wrench x 1pc
- T. Hickey x 1pc
- U. Hexagon Nut x 1pc
- V. Set Screw Assembly x 1pc



**b. Hardware Bag**

- I1. Rod 6" x 2pc
- I2. Rod 12" x 6pcs

