

INSTALLATION INSTRUCTION FOR N1947

WARNING! SHUT POWER OFF AT FUSE OR CIRCUIT BREAKER .
AVERTISSEMENT! COUPER LE COURANT AU NIVEAU DES FUSIBLES OU DU DISJONCTEUR.

READ AND SAVE THESE INSTRUCTIONS

PREPARATION

1. Shut off the power at the fuse box or circuit breaker box. If necessary, remove the old fixture and all mounting hardware from junction box.
2. Carefully unpack your new fixture and lay out all the parts on a clear area. Take care not to lose any parts necessary for installation.

ASSEMBLING THE FIXTURE (Fig.1)

3. Determine desired hanging height and thread rods (K, L, M, N) to coupling (O). Then thread loop (J) onto rod (K). Pass wires carefully through each rod and loop (J).

HANGING THE FIXTURE (Fig. 1)

4. Thread all thread (E) into ceiling loop (G) until snug.
5. Thread other end of all thread (E) with ceiling loop (G) into the crossbar (A) until snug. Note: The length of all thread into crossbar may be adjusted if necessary.
6. Place lock washer (C) and hex nut (D) onto all thread protruding through top of cross bar (A). Then thread hex nut (D) onto all thread (E) until snug.
7. Take crossbar (A) assembly and mount to junction box (not included) using outlet box screws (B) (Size: #8-32*0.6"L). The side of crossbar (A) marked "GND" must face out.
8. Slip lock collar (H) and canopy (F) over rods, allowing them to rest on fixture's coupling (O).
9. Use quick link (I) to connect loop (J) and ceiling loop (G).
10. Feed fixture wires through ceiling loop (G) and all thread (E) and pull tightly.

CONNECTING THE WIRES (Fig.2)

11. Connect the electrical wires as shown in Fig.2, making sure that all wire connectors are secured. If your junction box has a ground wire (green or bare copper), connect fixture's ground wire to it. Otherwise, connect fixture's ground wire directly to crossbar (A) using green screw provided.
12. Tuck wire connections neatly into junction box.

COMPLETING THE INSTALLATION (Fig. 1)

13. Raise canopy (F) to ceiling. Then raise lock collar (H) and thread onto ceiling loop (G) protruding through canopy (F).
14. Install (12) twelve candelabra base bulbs up to 60 watts each or CFL or LED equivalent (Not included) in accordance with the fixture specification. **(DO NOT EXCEED THE SPECIFIED WATTAGE!) (NE PAS DEPASSER LA PUISSANCE NOMINALE MAXIMALE!)**
15. Thread crystal drop (Q) into the bottom of tube (P).
16. Install crystal glass (R, S) onto the fixture's body, and secure with screws (U) using wrench (T) (Provided). Don't over tighten.

NOTE: When installing screws (U), make sure to leave 1-2 millimeters exposed.

Your installation is now complete. Return power to the junction box and test the fixture.

Fig.1

Set#A-021-110047

- Crossbar
- Ground screw
- Junction box screws*2
- Nipple*1
- Lock washer*1
- Nipple*1

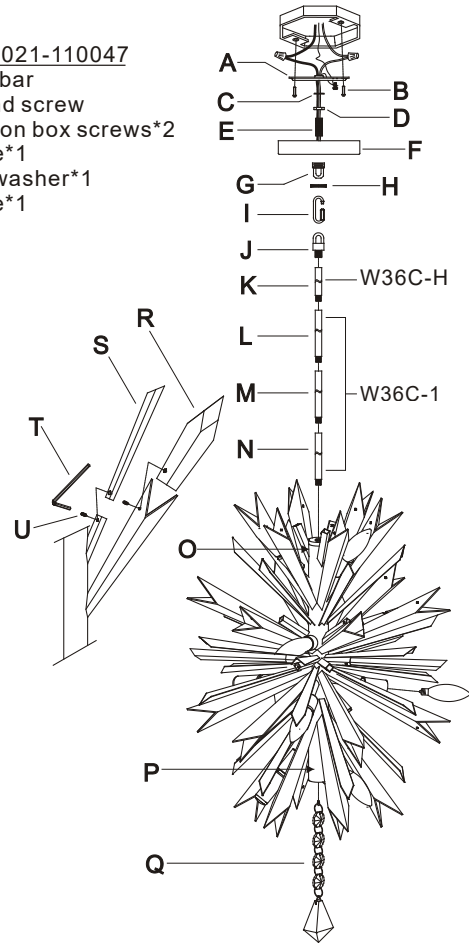
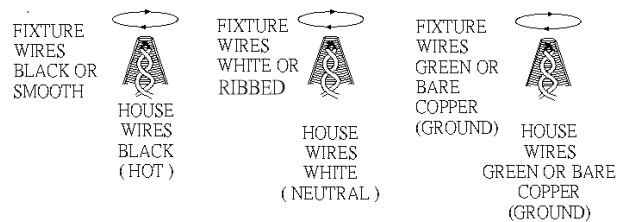
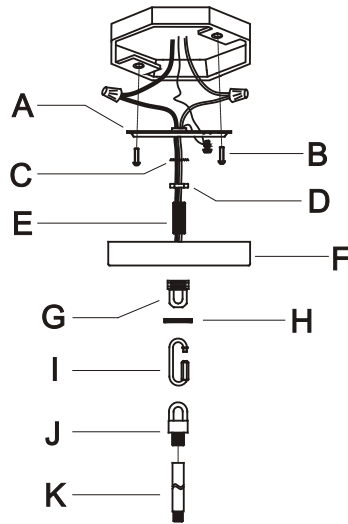


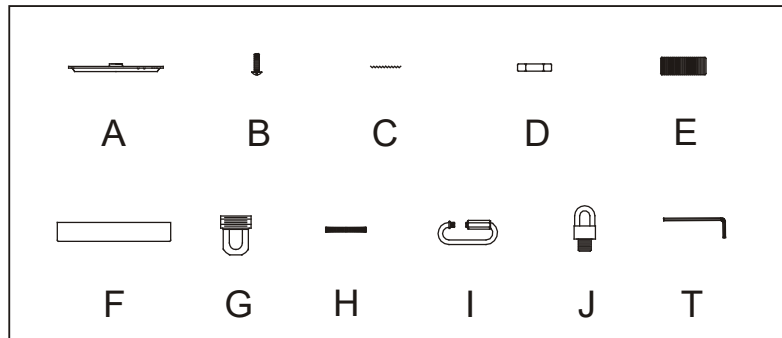
Fig.2





a. Hardware Bag:

- A. Crossbar *1
- B. Junction Box Screws *2
- C. Lock Washer *1
- D. Hex Nut *1
- E. All Thread *1
- F. Canopy *1
- G. Ceiling Loop *1
- H. Lock Collar *1
- I. Quick Link *1
- J. Loop *1
- T. Wrench *1



b. Hardware Bag:

- L, M, N. Rod 12" *3
- K. Rod 6" *1

