

# INSTALLATION INSTRUCTIONS FOR FIXTURE #P1376-613

**WARNING! SHUT POWER OFF AT FUSE OR CIRCUIT BREAKER.**  
**AVERTISSEMENT! COUPER LE COURANT AU NIVEAU DES FUSIBLES OU DU DISJONCTEUR.**

## ASSEMBLING THE FIXTURE (FIG. 1)

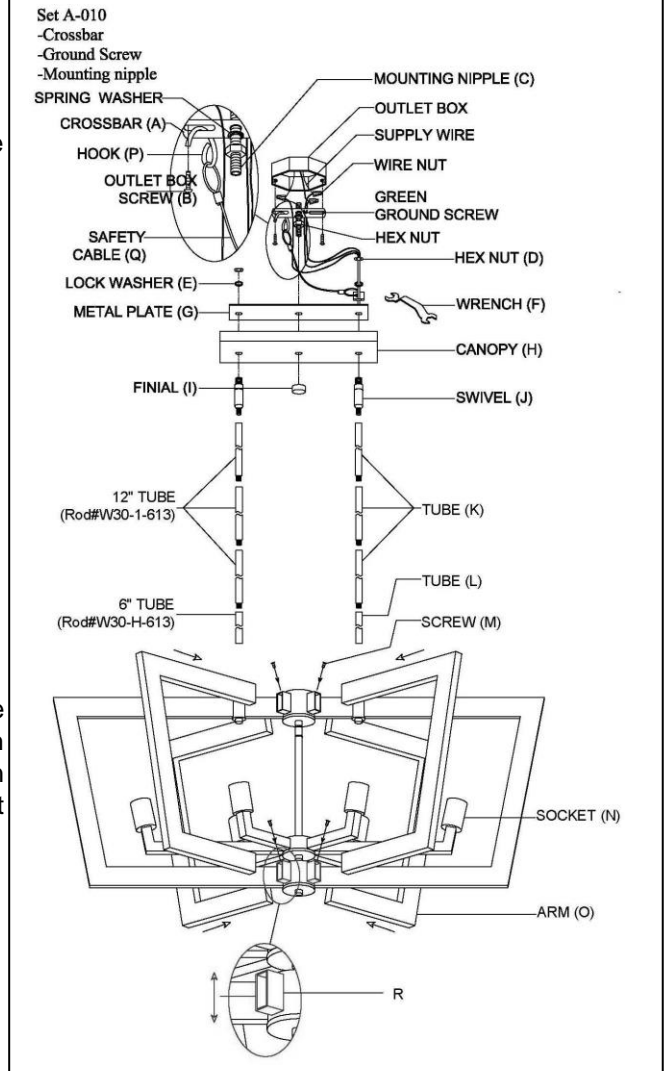
1. Shut off the power supply at the fuse box or circuit breaker. If necessary, remove the old fixture from ceiling including the mounting hardware.
2. Carefully remove the new fixture from the packaging and check that all parts are included as shown in the illustration.
3. Adjust the position of parts (R) by sliding the parts (R) up and down, secure the arms (O) to the fixture body by threading the screws (M).
4. Determine the desired hanging height and thread tubes (K & L) to the nipples on top of the fixture body. Pass the wires carefully through each tube as you assemble.
5. Thread the swivels (J) to end of the tubes (K & L).
6. Slide the canopy (H) and metal plate (G) over the nipples of swivels (J), then secure with two lock washers (E) and two hex nuts (D) by using the wrench (F).

## MOUNTING THE FIXTURE (Fig. 1)

7. Thread the mounting nipple (C) into crossbar (A), then secure with spring washer and hex nut.
8. Attach the crossbar (A) to the outlet box using the outlet box screws (B). The side of the crossbar (A) marked "GND" must face out.
9. The safety cable (Q) is provided to support the weight of the fixture while wiring. Align the fixture to crossbar (A) and attach hook (P) on the end of safety cable (Q) into a slot located on crossbar (A). Carefully allow the safety cable (Q) to support the weight of the fixture while wiring.
10. Connect the electrical wires as shown in Fig. 2, making sure that all wire connectors are secured. If your outlet box has a ground wire (green or bare copper), connect the ground wire from the fixture to it. Otherwise, connect the fixture's ground wire directly to the crossbar using the green screw provided.
11. After wires are connected, tuck them carefully into the ceiling junction box.
12. Attach the canopy (H) onto the outlet box by protruding mounting nipple (C) through mounting hole on the canopy (H) and secure with finial (I).
13. Install the bulbs (not included) in accordance with the fixture's specifications. **(DO NOT EXCEED THE MAXIMUM WATTAGE RATING!) (NE PAS DEPASSER LA PUISSANCE NOMINALE MAXIMALE!).**

Your installation is now complete. Return power to the outlet box and test the fixture.

**Fig.1**



**Fig.2**

