

INSTALLATION INSTRUCTIONS FOR P5041-PL

For Wall Mount Fixture

WARNING! SHUT POWER OFF AT FUSE OR CIRCUIT BREAKER .
AVERTISSEMENT ! COUPER LE COURANT AUNIVEAU DES FUSIBLES OU DU DISJONCTEUR

PREPARATION

1. Shut off the power at the circuit breaker box (avertissement! couper le courant au niveau des fusibles ou du disjoncteur) and remove the old fixture, including the mounting hardware.
2. Carefully unpack your new fixture and lay out all the parts on a clear area. Take note of all small parts necessary for installation.

MOUNTING THE FIXTURE (FIG. 1)

3. The circular strap contains several pairs of threaded holes. Find the pair of holes that match the hole spacing in your fixture canopy and thread the two mounting screws (size: 8-32*1/2" L) part way into the circular strap. Secure circular strap to outlet box (not provided) with outlet box screws through slotted holes in circular strap.

CONNECTING THE WIRES (FIG. 2)

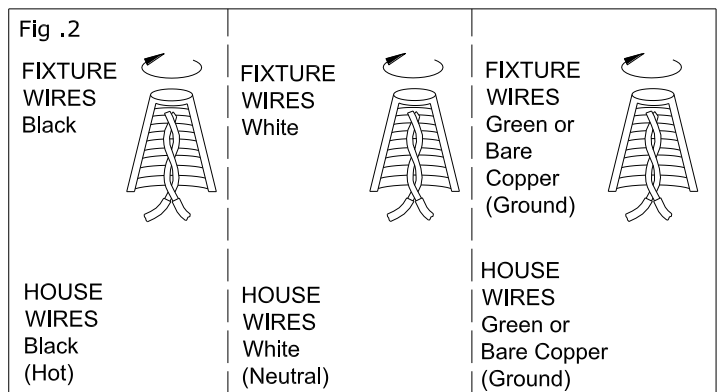
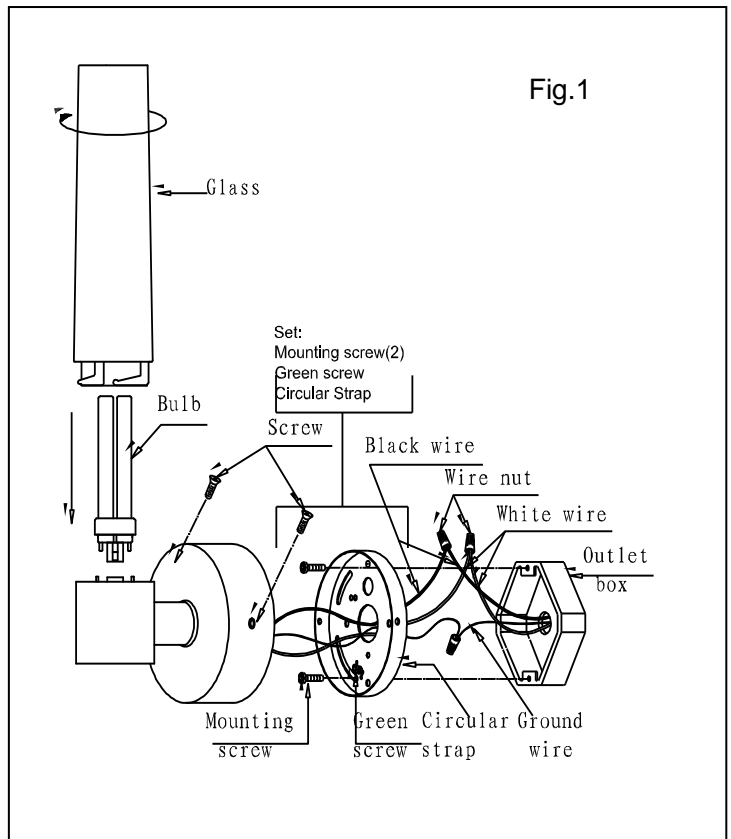
4. Connect the fixture wires to the junction box wires as shown in Fig. 2. Make sure all wire connectors are secure and do not easily pull off with a slight tug. If there is no Green ground wire from the junction box, connect the fixture ground wire to the circular strap or the cross bar with the green screw provided.
5. Tuck these wire connections neatly into the wall junction box.

Place the canopy over the mounting screws.

COMPLETING THE INSTALLATION

6. Install the PL Bulb in accordance with the fixture's specification (1xMax 13W included):
DO NOT EXCEED THE MAXIMUM WATTAGE RATING! (NE PAS DEPASSER LA PUISSANCE NOMINALE MAXIMALE)
7. Place the glass over the socket then secure it. Return the power to the junction box and test the fixture. Your installation is now complete.

IMPORTANT: Fixture should be installed by a qualified electrician to ensure proper wiring and installation.



MIN 90°C SUPPLY CONDUCTORS

