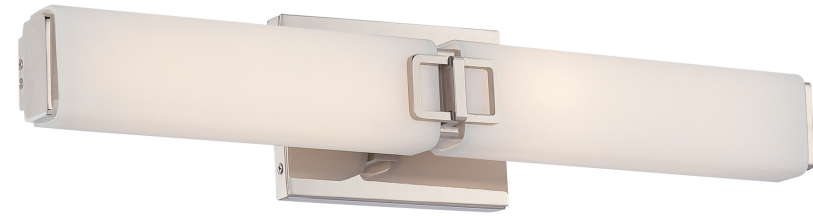
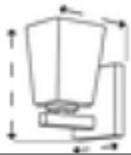


Item # 392-613-L	UPC Code: 747396094892
Product Family Name:	Finish: Polished Nickel
Category: BATH	Category Type: Bath
Certification 4006873	
Patents:	
Notes:	



Mounted Horizontally or Vertically

Image File Name: **392-613-L.jpg**



MEASUREMENTS

Width: 24.5	Length: 5	Height: 5	Extension: 4
Height Adjustable: No	Min Overall Height:	Max Overall Height:	Slope: No
Wire Length: 7	Chain Length:	Safety Cable Included: No	Net Weight: 5.4
Canopy Width: 5.0	Canopy Height: 7.0	Canopy Length:	Center to Bottom: 2.5
Backplate Width:	Backplate Height:	Center to Top: 2.5	

No. of Bulbs: 2	Light Type: L-MD-L03011-15W			
Max Bulb	Socket:			
Wattage: 31	LED MODULE			
Dimmable: No	Ballast:	Rated Life Hours: 30000	Photocell Included: No	Bulb/LED Included: Y
Bulb/LED Included: Yes	Color Temp.: 3000	CRI: 95	Initial Lumens: 2254.3	Delivered Lumens: 1490.0



SHIPPING

Description: ETCHED OPAL	Material: GLASS
Part No.: G391	Quantity:
Width: 11.5	Height: 3.0
	Length: 2.0

Carton Width: 7.88	Carton Height: 11.5	Carton Length: 27.5
Carton Weight: 7.35	Carton Cubic Feet: 1.442	Small Package Shippable: Yes
Master Pack Width:	Master Pack Height:	Master Pack Length:
Master Pack Weight:	Master Cubic Feet:	Multi-Pack: 1
		Master Pack:

LED



**ADA
Compliant**



**Damp
Location**



**ETL
Intertek**



WARNING: Handling this product can expose you to chemicals including lead, which is known to the State of California to cause cancer and birth defects or other reproductive harm. Wash hands with soap and water after installing, handling, cleaning or otherwise touching this product. For more information go to: www.P65Warnings.ca.gov.

For additional information, please contact Customer Care: 1-800-221-7977 | Product depicted on this spec sheet is protected by United States Federal and/or State laws including US Patent, Trademark and/or Copyright and unfair competition laws. Unauthorized reproduction or use carries severe legal penalties.