

Item # P1111-613-L	UPC Code: 844349013846
Product Family Name: Hooked	Finish: Polished Nickel
Category: FLUSH MOUNT	Category Type: Flush Mount
Certification 3195125	
Patents:	
Notes:	

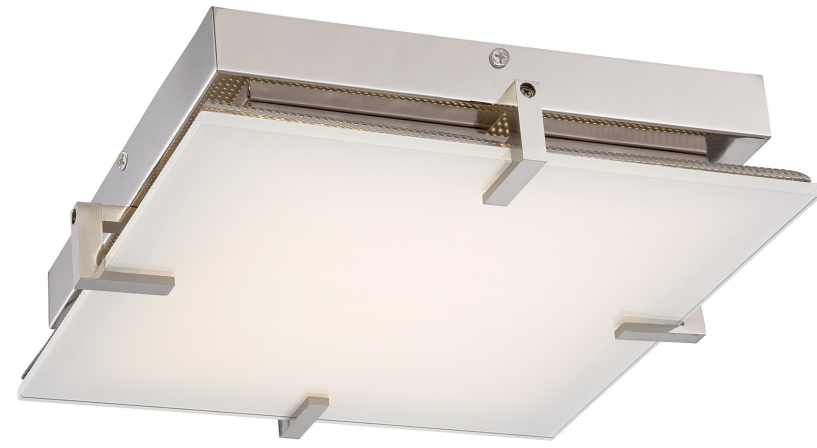


Image File Name: P1111-613-L.jpg



MEASUREMENTS

Width: 14	Length: 14	Height: 3.25	Extension:
Height Adjustable: No	Min Overall Height: 	Max Overall Height: 	Slope: No
Wire Length: 7	Chain Length: 	Safety Cable Included: No	Net Weight: 12.24
Canopy Width: 12.0	Canopy Height: 1.5	Canopy Length: 12.0	Center to Bottom:
Backplate Width: 	Backplate Height: 	Center to Top: 	

No. of Bulbs: 1	Light Type: LED			
Max Bulb Wattage: 30	Socket: LED MODULE			
Dimmable: Yes	Ballast: 	Rated Life Hours: 30000	Photocell Included: No	Bulb/LED Included: Y
Bulb/LED Included: Yes	Color Temp.: 3000	CRI: 90	Initial Lumens: 2020.14	Delivered Lumens: 978.0

Description: Clear/White Inside	Material: Glass
Part No.: PG1111	Quantity: 1
Width: 13.0	Height: 0.31
	Length: 13.0



SHIPPING

Carton Width: 17.25	Carton Height: 6.75	Carton Length: 17.25
Carton Weight: 14.45	Carton Cubic Feet: 1.162	Small Package Shippable: Yes
Master Pack Width: 	Master Pack Height: 	Master Pack Length:
Master Pack Weight: 	Master Cubic Feet: 	Multi-Pack:
		Master Pack: 1

LED



**ADA
Compliant**



Title 17



**ETL
Intertek**



WARNING: Handling this product can expose you to chemicals including lead, which is known to the State of California to cause cancer and birth defects or other reproductive harm. Wash hands with soap and water after installing, handling, cleaning or otherwise touching this product. For more information go to: www.P65Warnings.ca.gov.

For additional information, please contact Customer Care: 1-800-221-7977 | Product depicted on this spec sheet is protected by United States Federal and/or State laws including US Patent, Trademark and/or Copyright and unfair competition laws. Unauthorized reproduction or use carries severe legal penalties.