

Item #
P600-3-603
 Product Family Name:
P3™
 Category:
SWING ARMS
 Certification
3057374
 Patents:

UPC Code:
870540002600
 Finish:
Matte Brushed Nickel
 Category Type:
Wall Lamp

Notes:
On/Off Switch Convertible to Pin-up

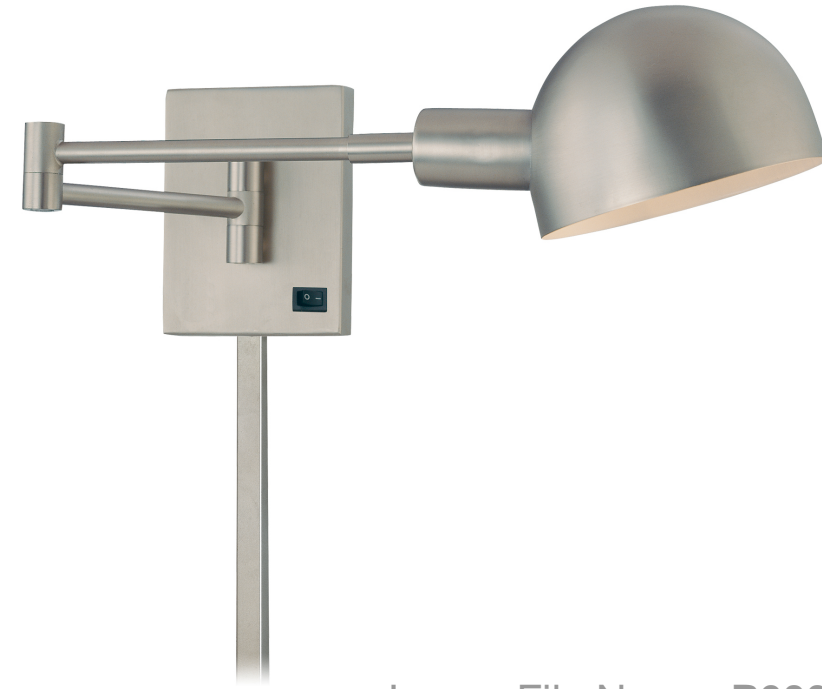


Image File Name: **P600-3-603.jpg**



MEASUREMENTS

Width: 17	Length: 6	Height: 7.25	Extension: 6
Height Adjustable: No	Min Overall Height: No	Max Overall Height: No	Slope: No
Wire Length: 96	Chain Length:	Safety Cable Included: No	Net Weight: 3.51
Canopy Width:	Canopy Height:	Canopy Length:	Center to Bottom:
Backplate Width: 4.5	Backplate Height: 6.0	Center to Top:	

No. of Bulbs: 1	Light Type: A19 LED BULB FROSTED			
Max Bulb Wattage: 9	Socket: E26, MEDIUM			
Dimmable: No	Ballast:	Rated Life Hours: 25000	Photocell Included: No	Bulb/LED Included: Y
Bulb/LED Included: Yes	Color Temp.: 3000	CRI:	Initial Lumens:	Delivered Lumens:



SHIPPING

Description: MATTE BRUSHED NICKEL	Material: STEEL
Part No.:	Quantity: 1
Width: 4.5	Height: 4.0
	Length: 6.0

Carton Width: 8.5	Carton Height: 21.0	Carton Length: 11.5
Carton Weight: 4.95	Carton Cubic Feet: 1.188	Small Package Shippable: Yes
Master Pack Width:	Master Pack Height:	Master Pack Length:
Master Pack Weight:	Master Cubic Feet:	Multi-Pack: 1
		Master Pack: 1



Title 17



Title 20



ETL Intertek



WARNING: Handling this product can expose you to chemicals including lead, which is known to the State of California to cause cancer and birth defects or other reproductive harm. Wash hands with soap and water after installing, handling, cleaning or otherwise touching this product. For more information go to: www.P65Warnings.ca.gov.

For additional information, please contact Customer Care: 1-800-221-7977 | Product depicted on this spec sheet is protected by United States Federal and/or State laws including US Patent, Trademark and/or Copyright and unfair competition laws. Unauthorized reproduction or use carries severe legal penalties.